

GHIDINI
1961
GHIDINI

2025 Collection

2025 Collection

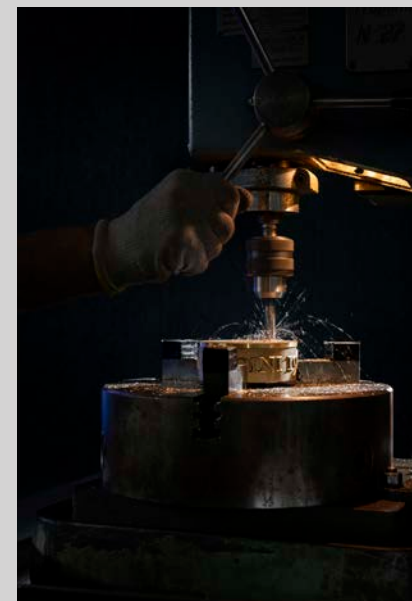
12_ **Mambo**_bed
14_ **Ufo**_small table
16_ **Cards**_small table
18_ **Arnold**_table and console
24_ **Hillary**_easy chair
26_ **Plomis**_bookshelf
30_ **Flexor**_bookshelf
34_ **Dash**_suspension lamp
38_ **Tratto**_suspension lamp
40_ **Dune**_Rug

About us

A Journey from masterful
brass craftsmanship
to iconic Italian design excellence

1961

**Giuseppe Ghidini founded
Ghidini Giuseppe Bosco,**
a company specializing in
producing brass components for
the lighting industry.



The entire production cycle
takes place in-house and is
characterized by meticulous
attention to detail: from the
idea to the end product,
passing through the various
processing stages—from
pressure die casting to
handmade lost wax, from
machining to drilling, from
satin-finishing to sand-blasting
and polishing.



The roots of success lie in the
tradition of metalworking
and their profound knowledge.

About us

Know how meets Design

2016

Ghidini1961 is born.

From the know how of Ghidini Giuseppe Bosco and collaborations with a diverse team of Italian and International designers, we give life to an innovative brand, where casted metal is at the core of our design language.



Our products are not just meant to decorate a refined environment. Still, they represent something valuable to be cared for, and that can be passed down through generations thanks to their intrinsic and long-lasting value blended with iconic and timeless design.

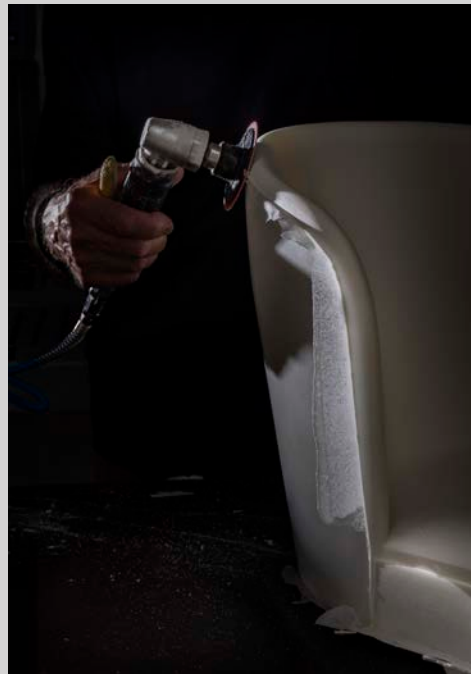


About us

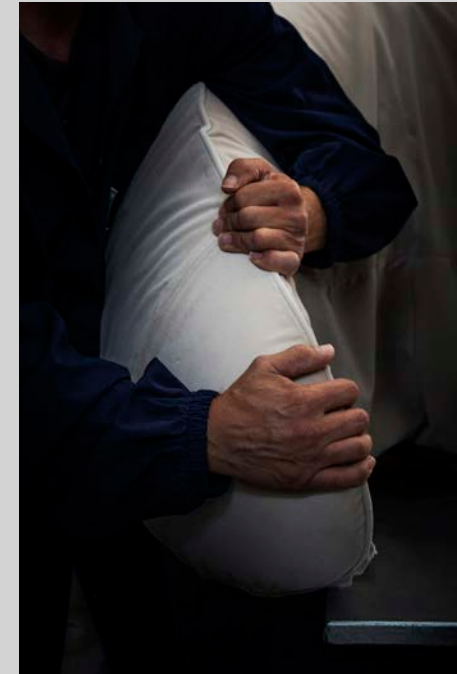
What makes a design product,
a Ghidini1961 one



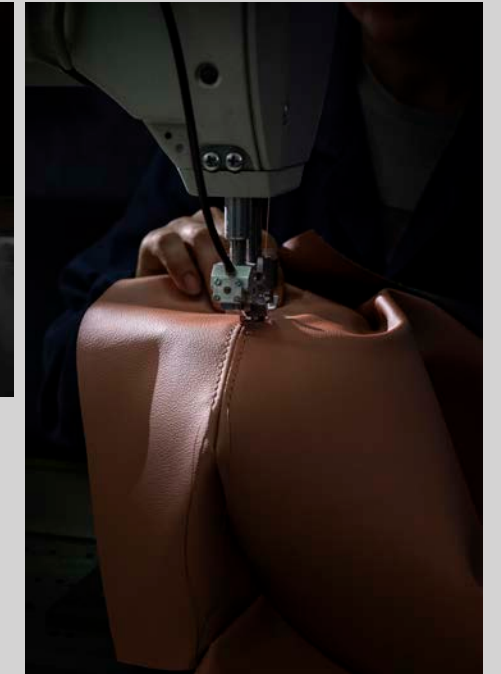
Mastering metal means expressing design in forms like no one else can. Ghidini1961 epitomizes Italian excellence, blending artistry and mastery in metal craftsmanship. With unparalleled skill in shaping metal, the brand creates distinctive designs free from creative constraints.



Over the years, the company has explored new materials. Ghidini1961 is committed to excellence, starting with meticulously selecting the finest materials. Every choice reflects a relentless pursuit of quality, ensuring only the best is used for each creation.



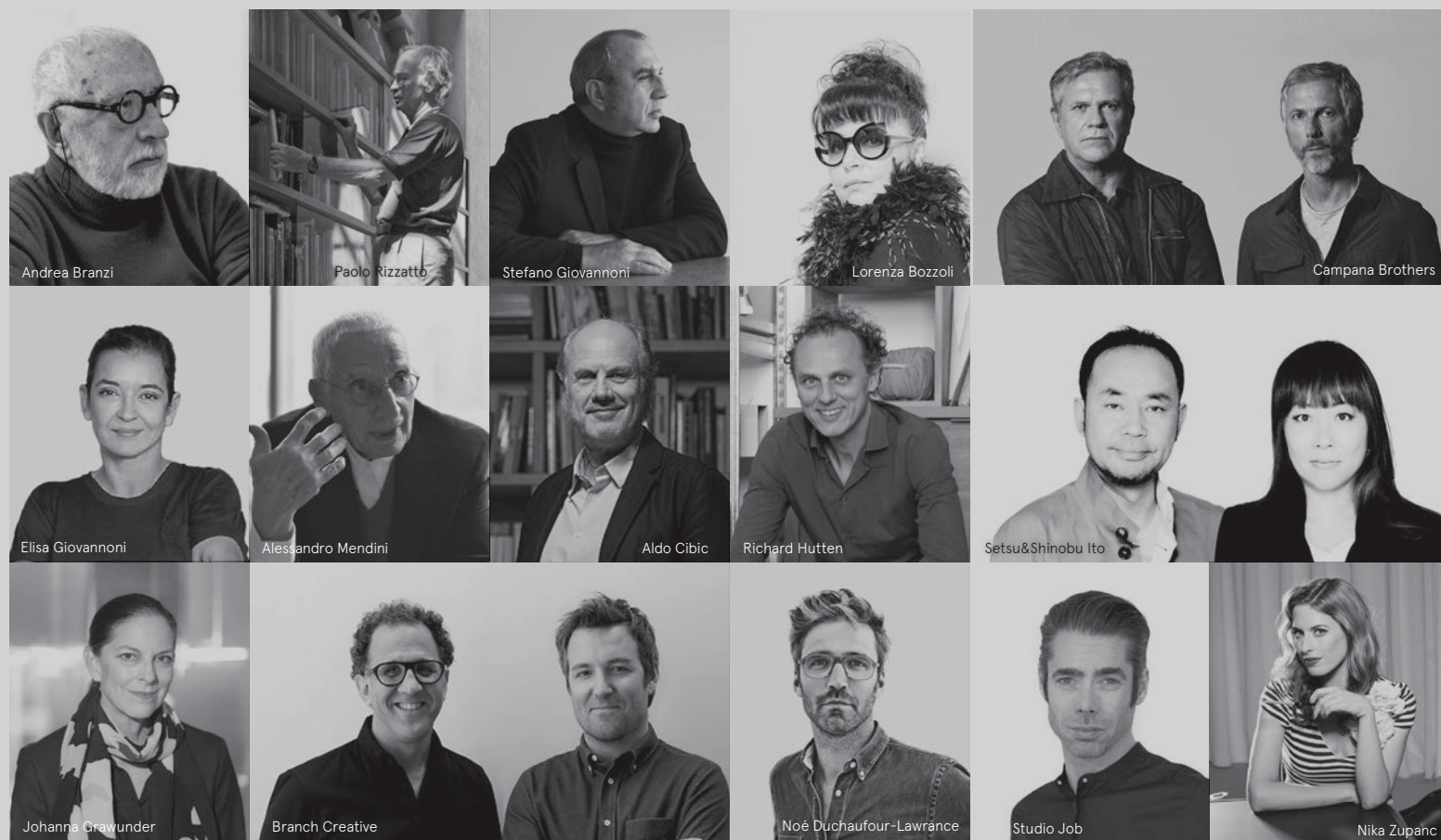
The dedication of our artisan is what makes every product unique. Their expertise and meticulous attention to detail are essential in crafting, refining, and inspecting each piece. The value of human craftsmanship shines through in every stage of the process, reflecting a deep respect for the artisans and their mastery.



When these values come together,
a Ghidini1961 product comes to life.

About us

A unique style interpreted
by internationally renowned designers



Led by CEO Roberto Ghidini, the company stands out in the contemporary design universe thanks to its quality, creativity, high craftsmanship and recognizable style. Collaborations with world-renowned designers such as Andrea Branzi, Lorenza Bozzoli, the Campana brothers, Johanna Grawunder, Richard Hutten, Alessandro Mendini and Paolo Rizzatto, to name a few, have further strengthened the brand. Dedication to excellence and constant innovation promise to keep Ghidini1961 at the top of the high-end segment.



Our furniture, Your story.

Mambo

Lorenza Bozzoli

bed **Mambo** - small table **Cards**
floor lamp **Can Can** - armchair **Leisure**



Mambo

This bed is not simply a piece of furniture but a celebration of the movement, fluidity and expressiveness of the famous Caribbean dance. The sinuous shape allows the bed to unfold in the space in an elegant way, evoking the graceful and lively movements of mambo dancers. Each element of the sofa is composed in harmony with the others in a dance that invites you to lie down and let yourself be lulled by its comfort. The color of the chosen velvet recalls the energy and fertility of the tropical land, its generous curls the costumes of Creole dancers.

Ufo

Next to the Mambo bed is a truly elegant combination – soft and enveloping design on one side, and futuristic and clean lines on the other.” The base is formed by a central column that extends into a four-spoke, pedestal-type support, also in a satin platinum finish, the upper structure is a container open on both sides, useful for storing books, objects or small devices.

bed **Mambo** - small table **Cards**

Cards

Lorenza Bozzoli

Cards is a wooden and metal, or marble and metal coffee table that combines functionality and design. Its name comes from direct inspiration: it recalls a construction of playing cards.

Perfect as a bedside table next to a bed or as a side table in the living room, Cards is an object that attracts the eye without being invasive.

Each side tells a different story, transforming a furnishing accessory into a small piece of domestic architecture.

The contrasting surfaces – a dark panel with a rounded profile and a metal side wall create a dynamic visual dialogue.



small tables **Cards** – armchair **Leisure**



Arnold

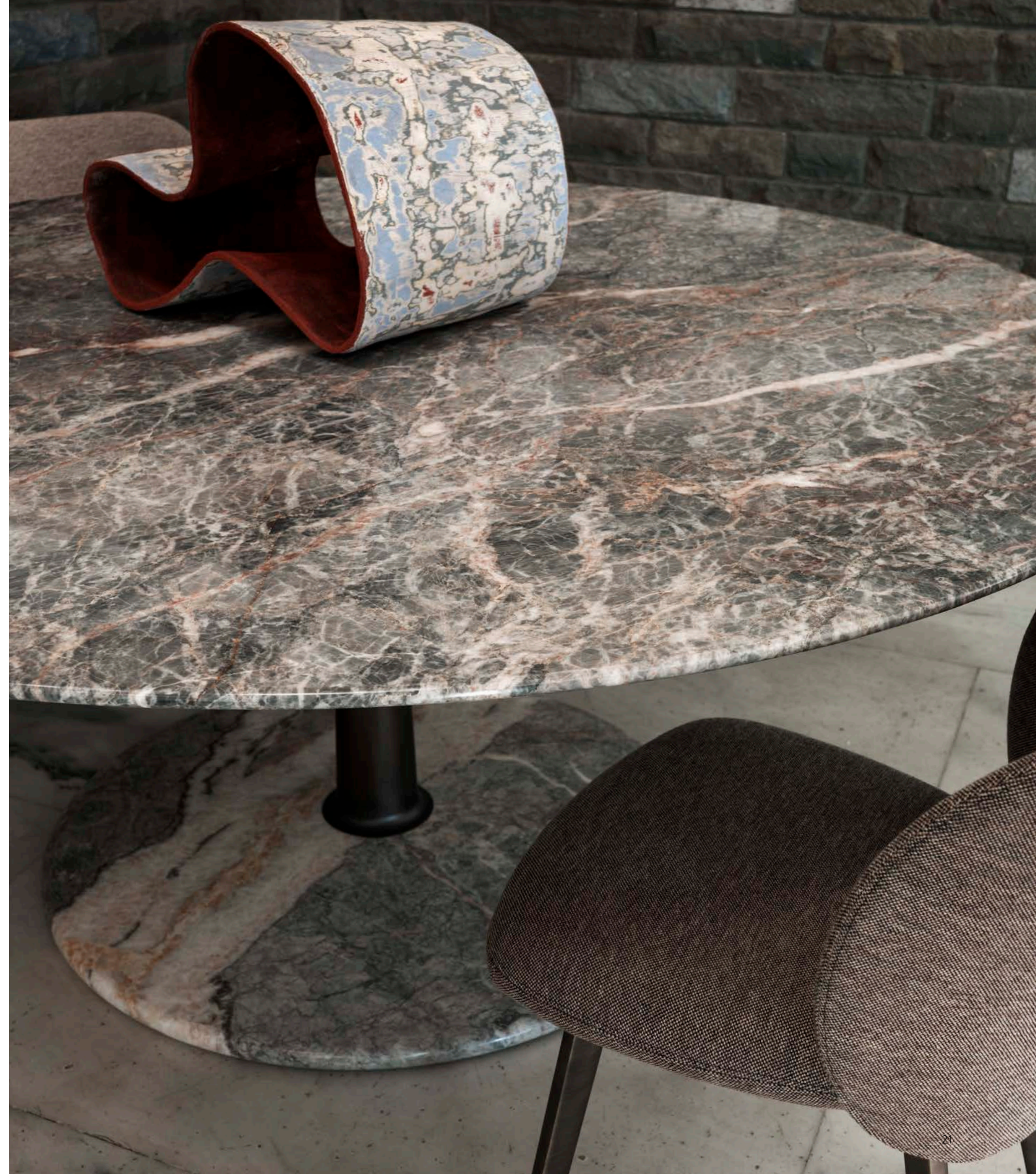
Paolo Rizzatto

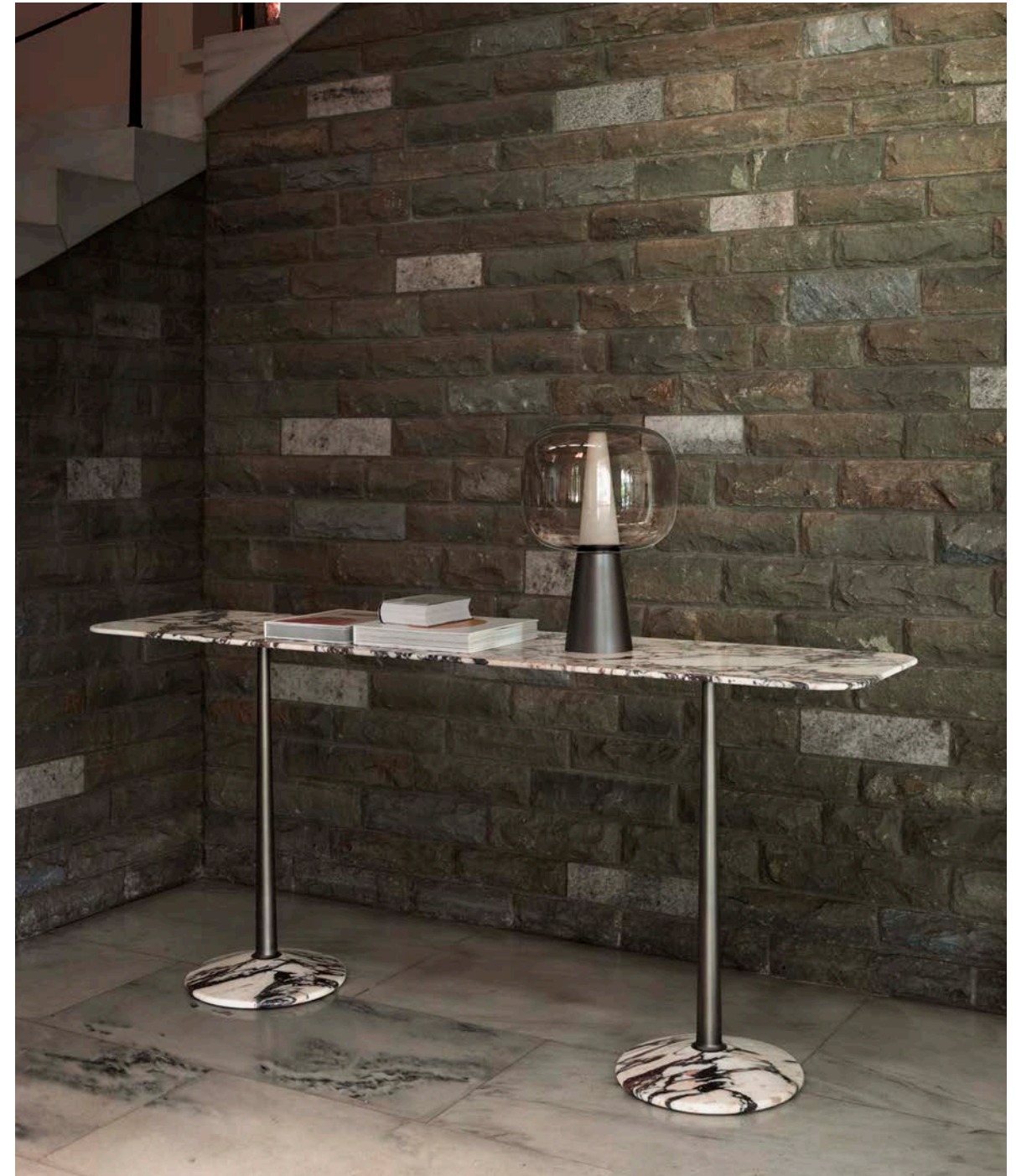
table **Arnold** - chairs **Hillary**
suspension lamp **Tratto**



Arnold

Three geometric shapes (a Line, a Plan, a Volume) and three materials (Metal, Wood, Marble) exploiting the artifice and techniques of “tapering” take the form of a solid tapered column completed with connections at the base and at the head providing a comfortable support surface characterized by a thin rounded edge and a stable truncated cone base. The several combinations of the three geometries and the three materials are enriched by some dimensional variations and, with the study and fine-tuning of their overall proportions, take their definitive and complete form where the elegant aluminum column, which draws and solves the connection and attachment between the top and the base, becomes the distinctive element of the project without taking over the other elements that take part in the compositional game.

table **Arnold** - chair **Hillary**



console **Arnold** – table lamp **Dusk Dawn**

Hillary

Richard Hutten

Hillary easy chair is the bigger version of the very successful Hillary dining chair. The generous proportions of the backrest give the chair its presence, while at the same time providing high comfort, like a tailor made jacket. With its sleek design, impeccable craftsmanship, and innovative features, it infuses sophistication and opulence into any space. Through a shared dedication to quality, this extraordinary furniture piece emerges as a timeless masterpiece.



easy chair **Hillary** – bookshelf **Plomis**



Plomis

Richard Hutten

bookshelf **Plomis** - armchair **Leisure**



Plomis

The Plomis bookshelf is a symbol of Italian luxury and elegance. Inspired by flowers, the playful and surprising design adds sophistication to any space. Versatile, Plomis masterfully explores the friction and harmony between minimalist elegance and ornate design. The fragmented surfaces create a stunning interplay of light and shadow, enhancing the contrast between solid metal and the wooden shelves. Bold and innovative.



Flexor

Robert Stadler





Flexor

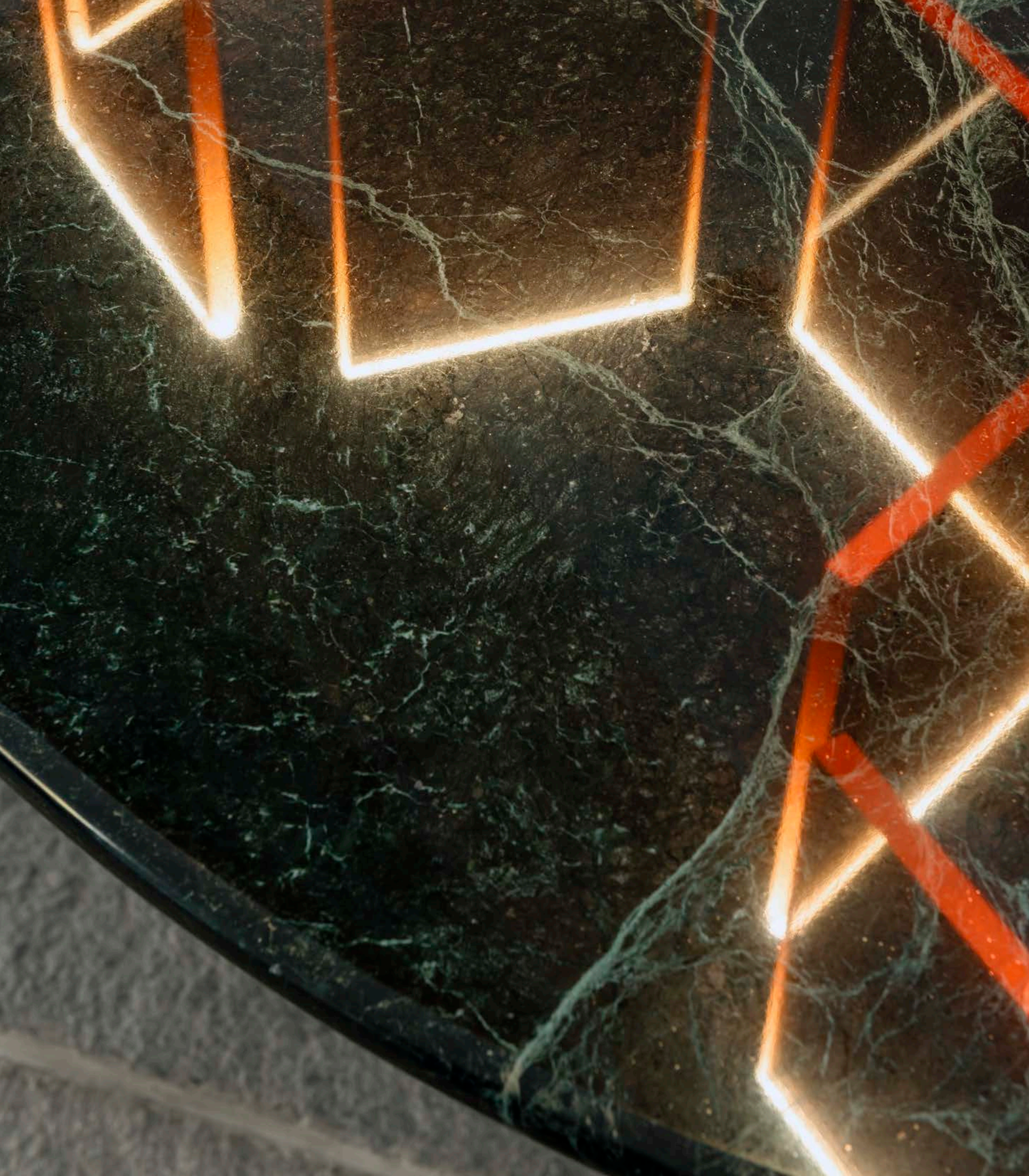
The Flexor shelving system's aluminum extrusion structure allows endless combination possibilities. The strong metal elements both connect and support the various wooden containers.

Dash

Johanna Grawunder

suspension lamp **Dash** – table **Tria**





Dash

Dash is a light of texture and geometry. Thick, fume'-colored cast acrylic panels, illuminated along the top edge, suspend from the tubular structure which zig zags its way through its route. The light is filtered through the material making a geometric dappled-light effect. With minimal structure, the light is maximized through the acrylic panels, creating a soft, transparent, and warm glow, with a crispier white light onto surfaces below.

Tratto

Paolo Rizzatto

The essence of the sophisticated form of a lighting fixture is expressed in a custom-made proposal. Besides being available in standard sizes for the single version, Tratto becomes a modular element that can be repeated infinitely. Elegance, versatility and discreet presence define the design of a product that is suitable for both residential and workspace solutions.

suspension lamp **Tratto** - table **Arnold** - chairs **Hillary**

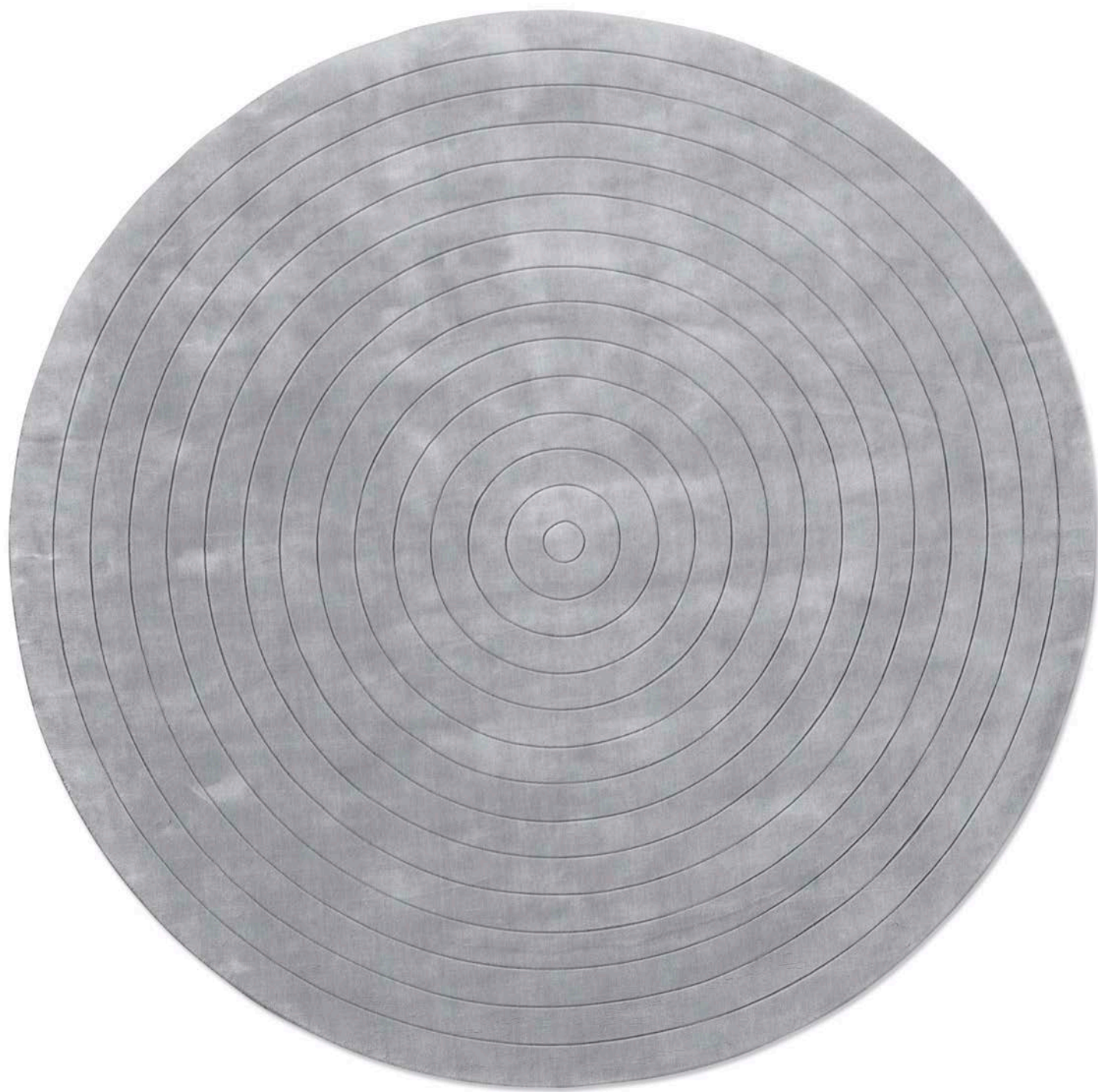


Dune

Richard Hutten

Dune is an elegant and trendy rug, elevating every space. Completely hand knotted using 100% New Zealand wool, the rug combines a luxurious feel with long-lasting quality.



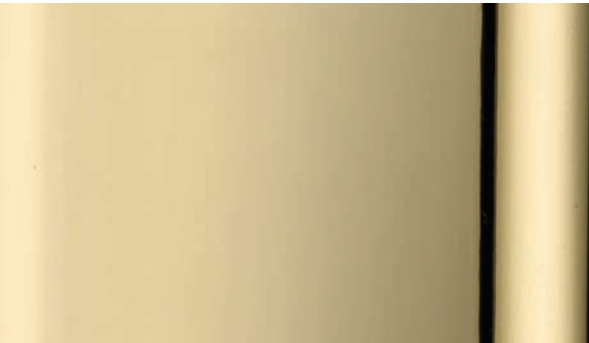


Materials Collections and technical specifications

Metals **46**, Marbles **48**, Woods **50**, Fabrics **52**.
Technical specifications **70**.

Metal finishes

All our finishes are handmade, and all surfaces are lacquered to provide a long lasting durability



Polished brass PB - Cat. A



Chrome CH - Cat. A



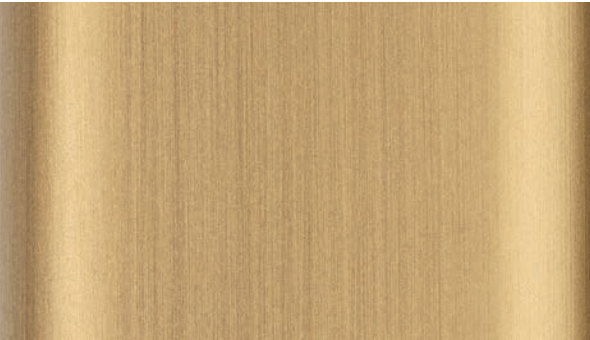
Satin Platinum SP - Cat. B



Orbital Bronze OB - Cat. B



Satin brass SB - Cat. B



Light burnished brass LB - Cat. B



Satin Titanium ST - Cat. B



Brushed Copper BC - Cat. B



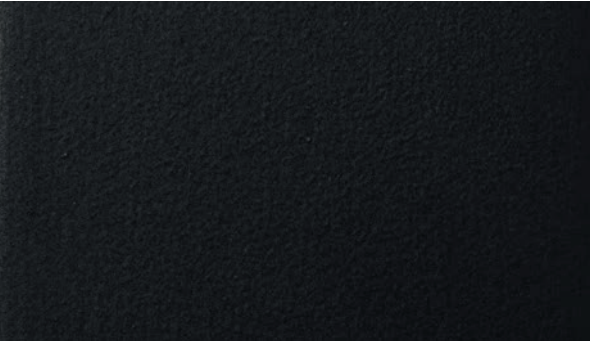
Dark burnished brass DB - Cat. B



Black Gold BG - Cat. B



Deep Anthracite DA - Cat. C



Deep Dark DD - Cat. C



Brown burnished brass BB - Cat. B



Brushed Silver BS - Cat. B



Deep Gold DG - Cat. C



Deep Silver DS - Cat. C

Marbles Collection



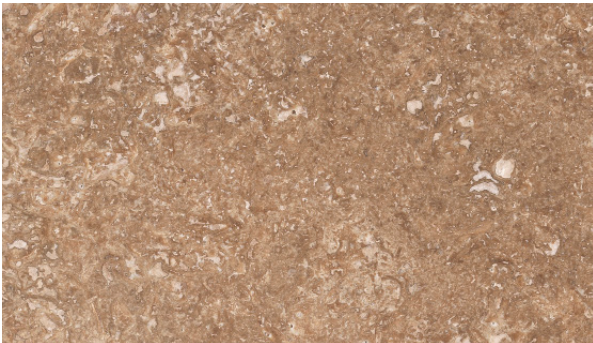
Calacatta Gold CG - Cat. A



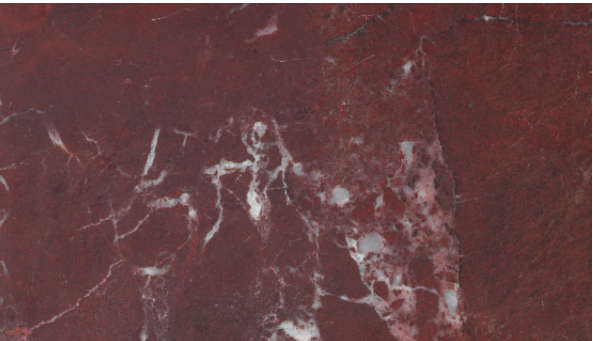
Calacatta Purple CP - Cat. A



Classic Travertine TC - Cat. C



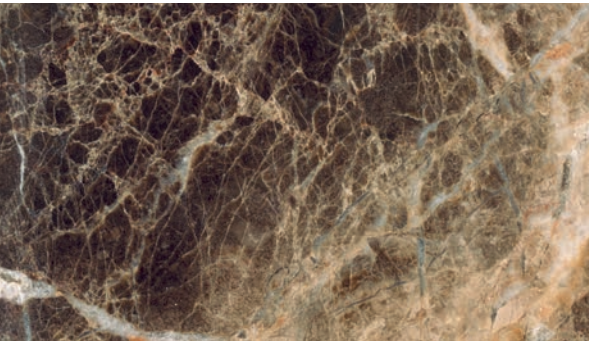
Travertine Walnut TW - Cat. C



Rosso Levanto RL - Cat. A



Portuguese Rose PR - Cat. A



Emperador Dark ED - Cat. C



Carrara White CW - Cat. C



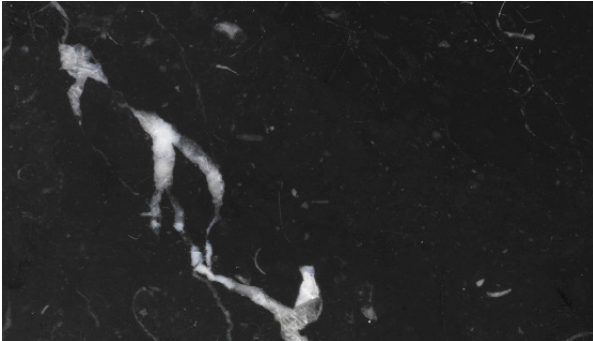
Fior di pesco FP - Cat. B



Yellow Siena YS - Cat. B



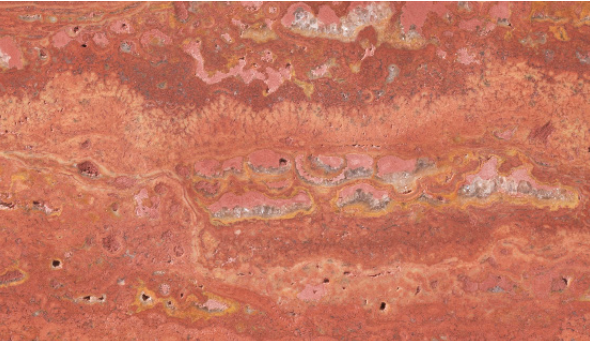
Verde Alpi VA - Cat. C



Black Marquinia BM - Cat. C



Sahara Noir SN - Cat. B

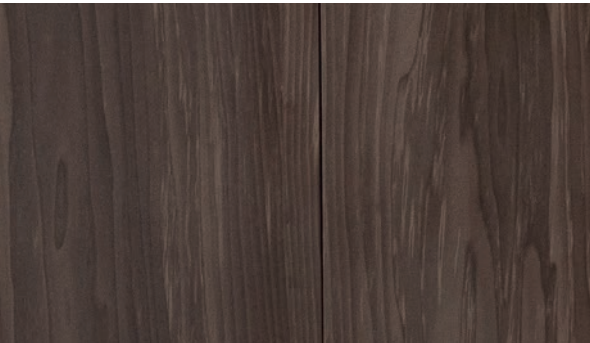


Red Travertine TR - Cat. B

Woods Collection



Natural Oak



Bolivar



New Lime



Caleido



Canaletto Walnut



Mahogany

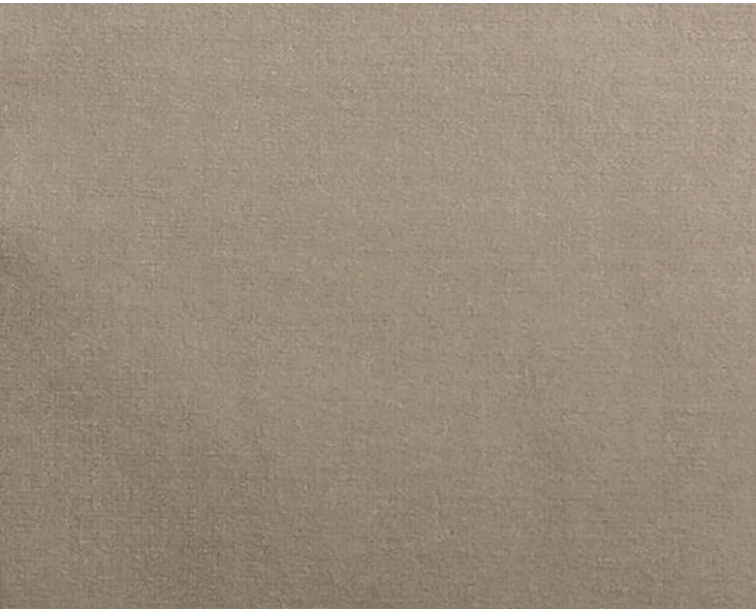


Coffee Moka Sablè



Matt Oak

Adamo&Eva



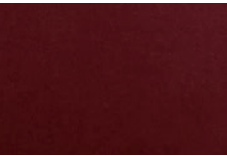
129 - roccia

Category
Cotton Velvet

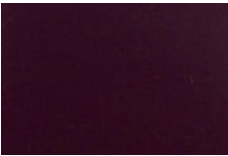
Composition
100%CO
Weight: g/ml 630
Width: cm 140 – 55.12 inches
Cfa: Yes
Martindale: 50.000

Price Category A

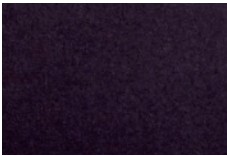
Washing Instructions



116 - cayenne



119 - prugna



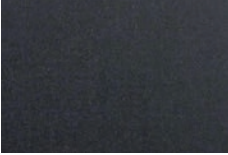
106 - mirtillo



168 - mousse



129 - roccia



107 - antracite



169 - cactus



104 - indigo



178 - ostrica



115 - safran



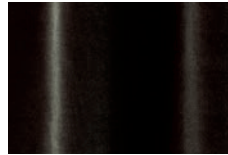
189 - verde inglese



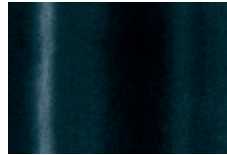
145 - olive



137 - cenere



175 - fumo



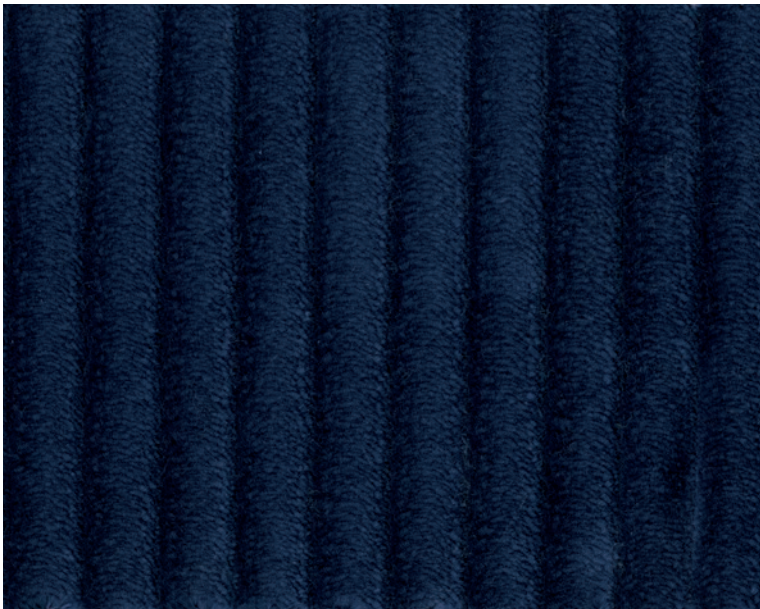
170 - notte



138 - nero

An exquisite quality of Ita-
lian-made cotton velvet that
is soft, versatile and hard-we-
aring. A palette of 13 colours
comprising striking, traditional
and neutral shades.

Cord



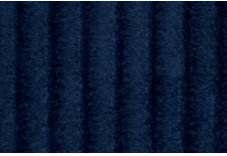
053

Category
Cotton Velvet

Composition
100% cotton, groundmaterial: 100% cotton
Width: 140 cm
Durability: 100 000 Martindale

Price Category A

Washing Instructions



053



070



064



050



091



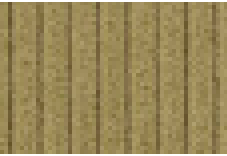
020



037



060



033



038



099

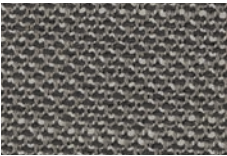
Bogardine



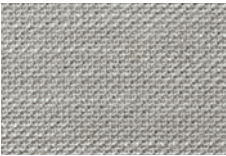
003 - perla



001 - quasinero



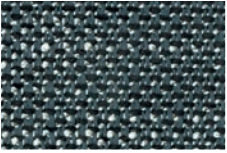
002 - taupe



003 - perla



004 - naturale



008 - ottanio



009 - bianco

Yarns of different types and thicknesses create a textural weave and confer a slight matelass   effect to the surface. Soft and consistent to the hand, hardwearing and ideal for heavy duty seating.

Clay



0010



002



005



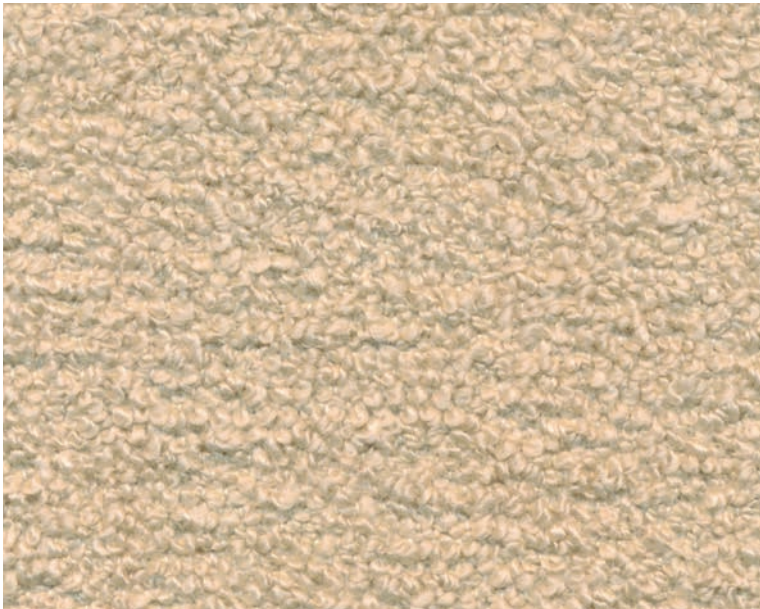
0010



009

Bringing together both natural beauty and a sense of finesse, the creative team have mixed colours of yarn in warp and weft to create an elegant yet casual fabric. The result has a unique structured surface that adds an extra dimension to any interior design scheme. With a back cloth that gives extra stability, Clay is perfect for upholstering furniture. The colours are inspired by the designer's love of both art and interiors and include cool shades of cement, blue, and salvia but also the natural shades of wood and clay.

Clunis



002

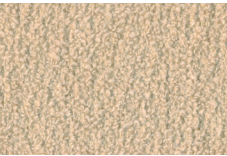
Category
Bouclé

Composition
33%WO-25%PL-25%PC-15%CO-2%PA
Width: 137 cm+/- 3%
Weight: 4935 gr/ml - 682 gr/sqm +/- 5%
Martindale: 40000 cycles+/-

Flame resistance
BS 5852-1 (1979) CIGARETTE
BS 5852:2006 CIGARETTE
BS 5852-1 (1979) MATCH
BS 5852:2006 MATCH
CAL TB 117:2013

Price Category B

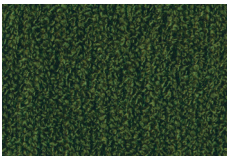
Washing Instructions



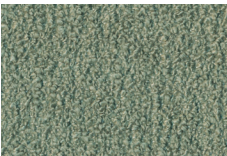
002



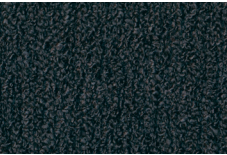
006



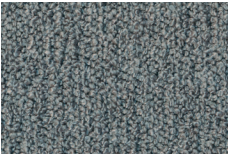
026



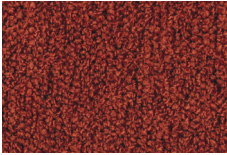
000



029



030



025

Lizza



011

Category

Tape Yarn fabric

Composition
68%VI-29%CO-3%LI
Width: 140 cm+/- 3%
Weight: 1000 gr/ml - 714 gr/sqm +/- 5%
Abrasion Martindale: 25000 cycles+/- 10%

Flame resistance
BS 5852-1 (1979) MATCH

Price Category B

Washing Instructions



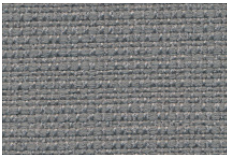
030



121



120



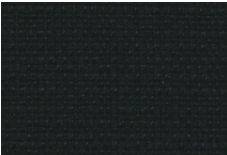
092



011

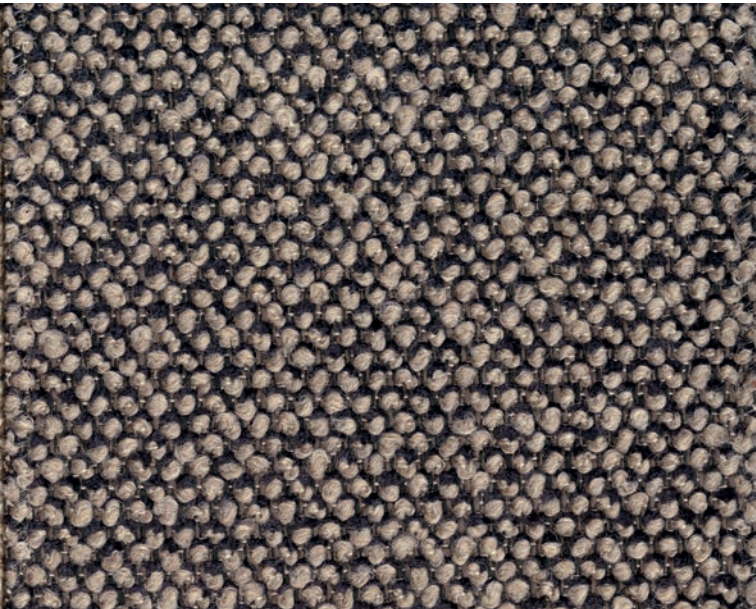


070



043

Safire



003



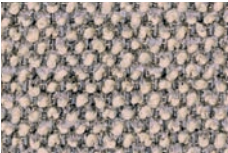
003



004



010



008

Category
BoucLe and chenille

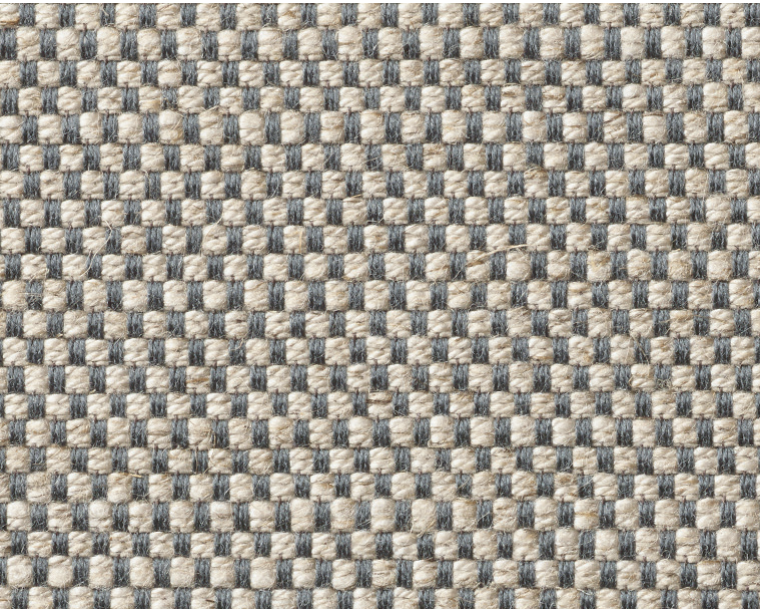
Composition
43% Viscose, 17% Acrylic, 15% New wool, 9% Cotton, 8% Linen, 8% Polyester
Weight: 1010 g/lin.m
Width: 140 cm
Durability: 44 000 Martindale
Pilling: 3
Lightfastness: 6
Sustainability: Greenguard Certification

Price Category B

Washing Instructions



Sinequanon



01 - argento



01 - argento



02 - taupe



05 - stone



07 - perla



37 - caffè arabica



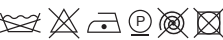
08 - linen

Category
Linen and Viscose fabric

Composition
60%CV 16%LI 13%CO 6%PES 5%PAN
Weight: g/ml 663
Width: cm 140 – 55.12 inches
Cfa: Yes
Martindale: 35.000

Price Category B

Washing Instructions



Twilltwenty



4 - cipria



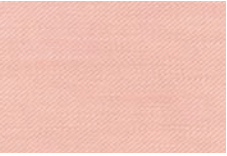
4 - cipria



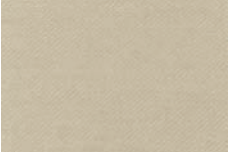
20 - ruggine



7 - nero



9 - pesco



3 - corda

Category
Twill

Composition
100%PI Flame Retardant
Width: 140 Cm
Weight: 630 Gr
Made in: Italy
Martindale: 80000
Pilling: 4/5 (Scale 1-5)
Colour Fastness To Light: 7 (Scale 1-8)
Colour Fastness To Crocking: 4/5 Dry 4/5 Wet (Scale 1-5)
Colour Fastness To Chlorinated Water: 4/5 (Scale 1-5)
Colour Fastness To Sea Water: 4/5 (Scale 1-5)
Tensile Strength: Class A (En 14465)
Tear Strength: Class A (En 14465)
Seam Slippage: Class A (En 14465)
Other Certifications: Yarns Certified Oeko-Tex
Fire Certifications: France M1 Nfp902-503-504-505, Ger-many B1 Din 4102-1, Imo 8 Upholstery, Italia Classe 1 Tendaggi, Uk Cigarette Source 0, Uk Contract Curtains Bs5867, Uk Contract Upholstery Bs7176, U.s.a. Cal Tb117

Price Category B

Washing Instructions 

A classic twill. A particularly thick thread/yarn highlights the “Z” diagonal motif which makes the fabric more dynamic. The shiny and matt threads enhance the effect of the light on the surface.

Bonsai



020



021



093



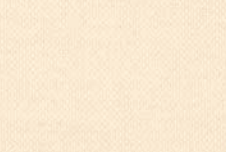
072



051



050



070



071



077


Category
Upholstery

Composition
48% PAN 29% CO 23% PES
Weight: 140 cm
Width: 905 per linear meter/g
Width: 646 per square meter/g
Durability: 50 000 Martindale
Seam slippage: <6mm
Pilling (DIN EN ISO 12945-2)
Rub fastness: Dry 4-5 Wet 4-5
Lightfastness: for medium colours 5

Flame retardent
BS 5852: Part 1: 1979
Ignition source 0 (Cigarette)

Fabric
Wave Dobby

Price Category C

Washing Instructions 

Diago



500

Category
Multi-Yarn Jacquard

Composition
37%CO-55%VI-8%LI
Width: 140 cm+/- 3%
Weight: 950 gr/ml - 679 gr/sqm +/- 5%
Abrasion Martindale: 27000 cycles+/- 10%

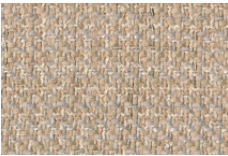
Flame resistance
BS 5852-1 (1979) MATCH

Price Category C

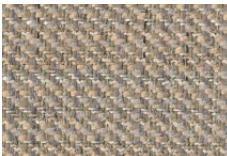
Washing Instructions



500



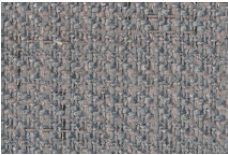
510



511



530



520

Sofi



187-101

Category
Cotton and viscose frisé

Composition
46%CO-47%VI-7%LI
Width: 850 gr/ml - 607 gr/sqm +/- 5%
Weight: 850 gr/ml - 607 gr/sqm +/- 5%
Martindale: 27000 cycles +/- 10%

Flame resistance
BS 5852:2006 CIGARETTE
BS 5852-1 (1979) MATCH
BS 5852:2006 MATCH

Price Category C

Washing Instructions



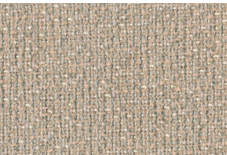
187-101



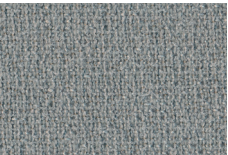
187-000



187-100



187-029



187-090



187-062

Kairos collection



1716 - doeskin

Category
Nabuck leather

Composition
Bovine of European origin in Nabuk finishing, natural grain.
The average size of each skin is around 5.0 sqm. Chrome tannage.
Aniline dyed, finished with high quality oils. Suede look, soft and velvet touch.
The possible presence of any imperfections testify the authenticity and the natural look of pure aniline leather.
Average thickness 1,2 - 1,4 mm.

Price Category A



1719 - kangaroo



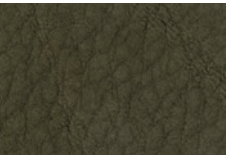
1716 - doeskin



1714 - lucky



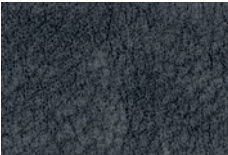
1704 - chocolate forest



1701 - caqui



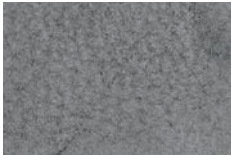
1711 - cenere



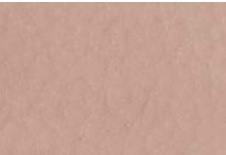
1721 - ematite



1715 - elephant



1710 - plomo



1718 - nude



1



5



6



7



20

Tivano



3611 - corda

Category
European cattle

Composition
Raw material: European cattle
Tanning: Mineral
Protection: Semianiline
Description: Waxed hand buffed
Thickness: 1,2 - 1,4 mm
Average size: 5,0 m²

Dry finishing locking	EN ISO 11644	≥ n.a. N/cm
Tear resistance	EN ISO 3377-1	≥ 20 N/cm
Flexing endurance	EN ISO 5402	≥ 20.000 runs
Dry rub colour fastness	EN ISO 11640	
	150 runs	≥ 4 grey scale
Wet rub colour fastness	EN ISO 11640	
	25 runs	≥ 4 grey scale
Light fastness	EN ISO 105-B	≥ 4 blue scale
Heat colour fastness	EN ISO 17228	≥ 4 grey scale

Avoid exposure to direct sunlight and heat sources
Clean frequently and gently with a soft cloth
Remove stains with a damp cloth or with a specific cleaning product

Price Category A



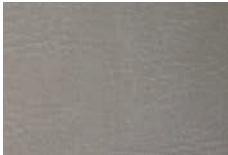
3611 - corda



3606 - tobacco



3603 - militare



3612 - fumo

Aida collection



Daino



Daino



Coffee



Tan



Saddle



Blackberry



Spruce



Nocturne



Mud



Grey



Sand

Category

Nappa Smooth leather

Composition

Average size 4.5-4.8 sqm, thickness 0.9-1.1 mm.
Chrome tannage.
Bovine leather with smooth aspect, aniline finished with some oils and waxes, produced on European bull.
Aniline dyed, finished with high quality oils. Soft article with a slight two tones effect, emotional touch.
The possible presence of any imperfections and color variations are typical for this type of leather as they testify the authenticity and the natural look of pure aniline leather.

Price Category B

Freddie collection



2

Category

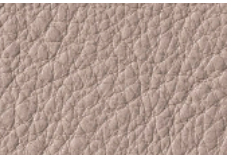
High quality bovine leather with full natural grain

Composition

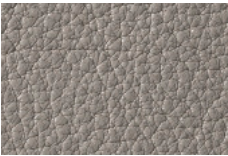
Bovine of European origin, finished thickness 1.4 mm.
Flammability of fabrics – Upholstered furniture for maritime use – IMO FTPC 8 (par. 7,2-7,3)
Flammability of fabrics – Upholstered furniture BS 5852-1:1979 (Crib 0 – Crib 1)
Flammability of fabrics – TB 117:2013

Resistance to bending
UNI EN ISO 5402-1 > 50,000 cycles – unaltered

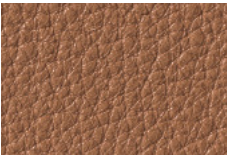
Price Category B



2



3



6

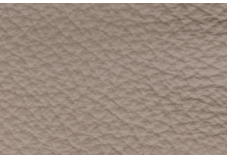


8

Linea collection



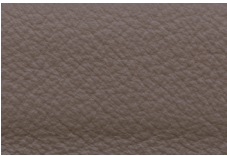
647 - grigio perla



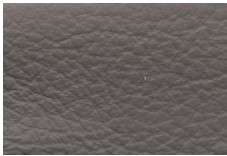
629 - stone



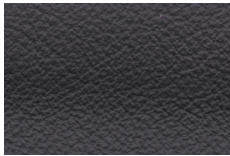
647 - grigio perla



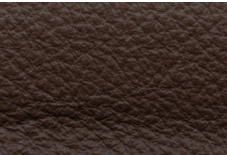
677 - malt



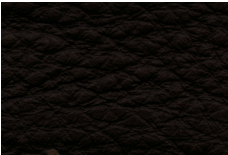
660 - asfalto



675 - new grey



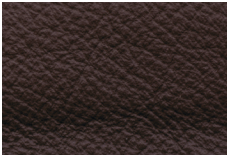
612 - castagna



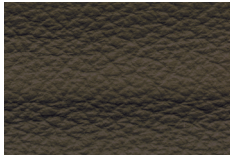
611 - testa moro



656 - cotto



610 - mogano



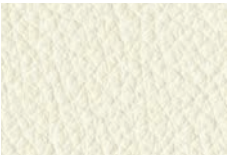
632 - verdone



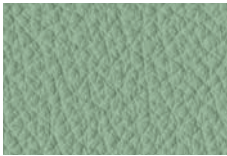
622 - nero



619 - giallino



634 - gesso



674 - octane

Category

High quality bovine leather with lightly buffed natural grain

Composition

Bovine of European origin, lightly buffed natural grain, finished thickness 0.9 – 1.1 mm.
The average size of each hide is around 4.8 – 5.0 sqm. Chrome tannage.
Through dyed; finishing with resins and pigments. Article with a pigmented and protective coat, with a soft, waxy feel and semi-matt appearance.

Price Category C

Cuoio Leather

Only for Frame and Flo family of seaters



naturale

Composition

Bovine of European origin in Nabuk finishing, natural grain.
Average thickness 1.8/2.0 mm. Chrome tannage.
Aniline dyed with pigmented finish.
The possible presence of any imperfections testify the authenticity and the natural look of pure cuoio leather.



avorio



bianco



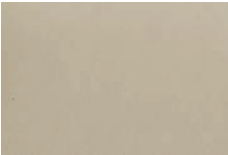
grigio



naturale



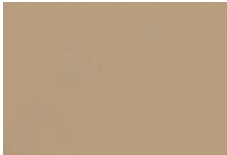
nero



nocciola



rosso bulgaro



sabbia



tabacco



testa di moro



tortora

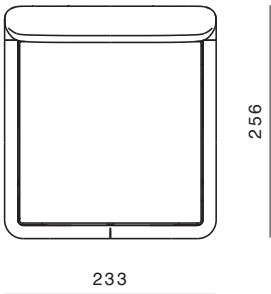
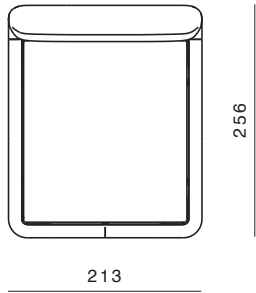
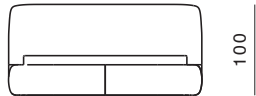


verde fango

Mambo

Lorenza Bozzoli

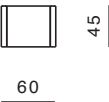
Structure
Internal structure in plywood panel and polyurethane rubber covered in fabric or leather.



Ufo

Lorenza Bozzoli

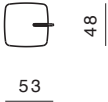
Structure
Auminum for the supporting structurevand feet. Wood veneered container with optional glass top.



Cards

Lorenza Bozzoli

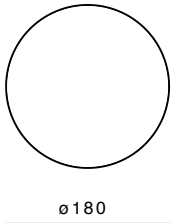
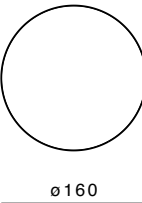
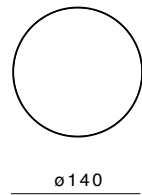
Structure
Solid oak or solid marble with metal insert.



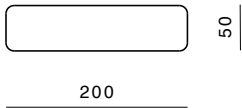
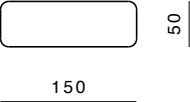
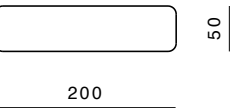
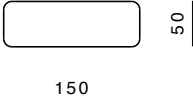
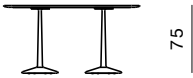
Arnold

Paolo Rizzato

Structure
Base and table top in marble or wood. Central element made of a conic aluminum column.



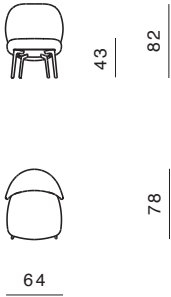
Top Finishes
20mm marble, 20mm wood.



Hillary

Richard Hutten

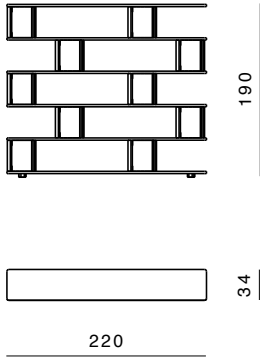
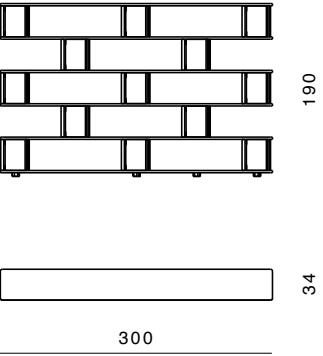
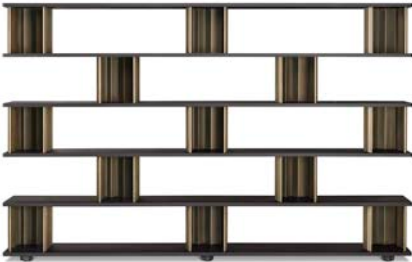
Structure
Legs in aluminum die casted in house at Ghidini1961.
Seat and backrest in high grammage wadding with internal wood and metallic insert.



Plomis

Richard Hutten

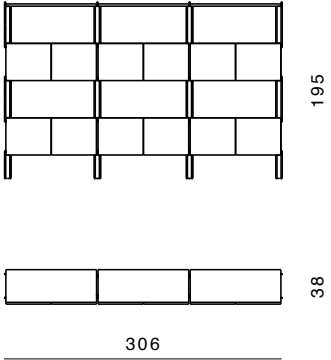
Structure
Shelves in aluminum honey combed, veneered in wood.
Metal elements in worked aluminum.



Flexor

Robert Stadler

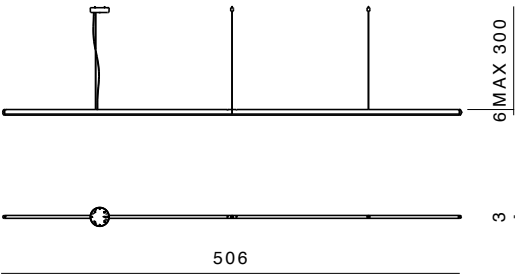
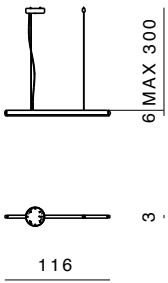
Structure
Extruded auminum for the supporting.
Wood veneered container.



Tratto

Paolo Rizzatto

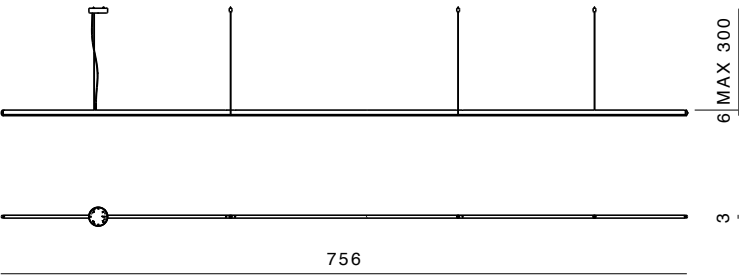
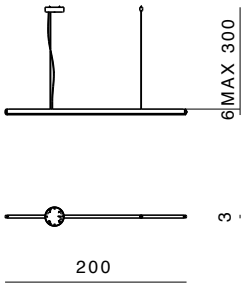
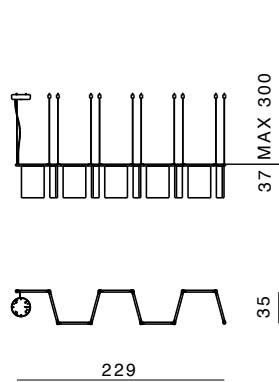
Structure
Casted aluminum worked in house and finished in various handmade and galvanized finishes, housing a LED source.



Dash

Johanna Grawunder

Structure
Aluminum worked in house and finished in various handmade and galvanized finishes, housing a LED source.
Casted plexi in various color variations



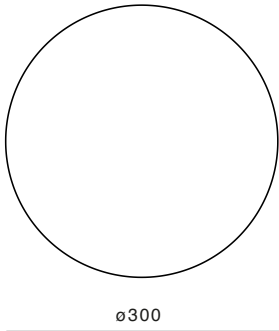
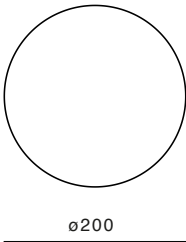
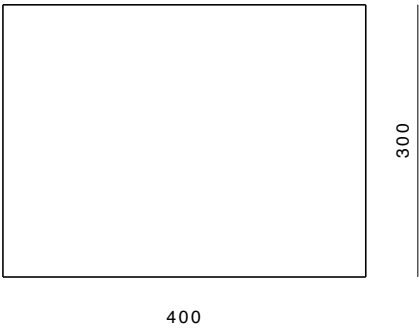
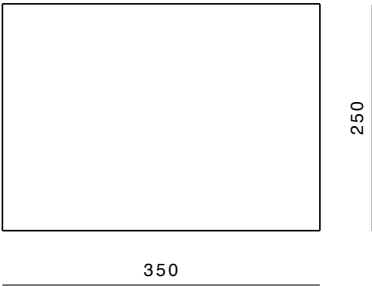
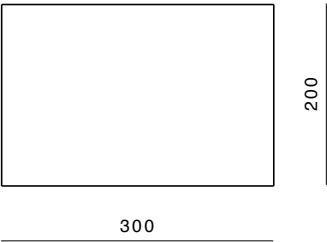
Dune

Richard Hutten

Material
New Zealand wool and Tencel

Technique
Hand tufted.
The fleece can then be finished by hand to different thicknesses with the use of scissors.

The fleece can be held as a “velvet” or a “loop” (small bouclè).
At the end of the weaving process, natural latex is poured on the back of the carpet, which gives greater compactness to the structure of the carpet.
Finally, a cotton cloth is applied on the back as a finishing touch.



Photos

Fabrizio Bergamo

Cube Photoproduction

Styling

Candida Zanelli, Rosaria Galli

Branding

Christoph Radl, Antonella Provasi

GHIDINI 1961 INIDIHG

is a trademark of

Ghidini Giuseppe Bosco spa

via Gabriele D'Annunzio 27
25069 Villa Carcina (BS) Italy
T +39 030 8980521
F +39 030 8981588
info@ghidini1961.com

Press office

press@ghidini1961.com

Sales office

sales@ghidini1961.com

www.ghidini1961.com