

APPARATU

Torn

A Selection of our last pieces made with Stoneware hand thrown on the wheel. Every piece is an exercise on materials, based on our studies in glazes, some of them are fired more then 4 times at 1280C°untyl the glaze make sense for us. The pieces can be used as side table or stool, each piece comes with a 5mm layer of natural leather in the bottom.









TORN, LA 634 (L)
Cobalt / Stoneware
350mm (diameter), 500mm (height)/Price: 2200€





TORN, LA 528
Rutile / Stoneware
350mm (diameter), 500mm (height)/Price: 2200€





TORN, LA 675
Iron / Stoneware
350mm (diameter), 400mm (height)/Price:2000€





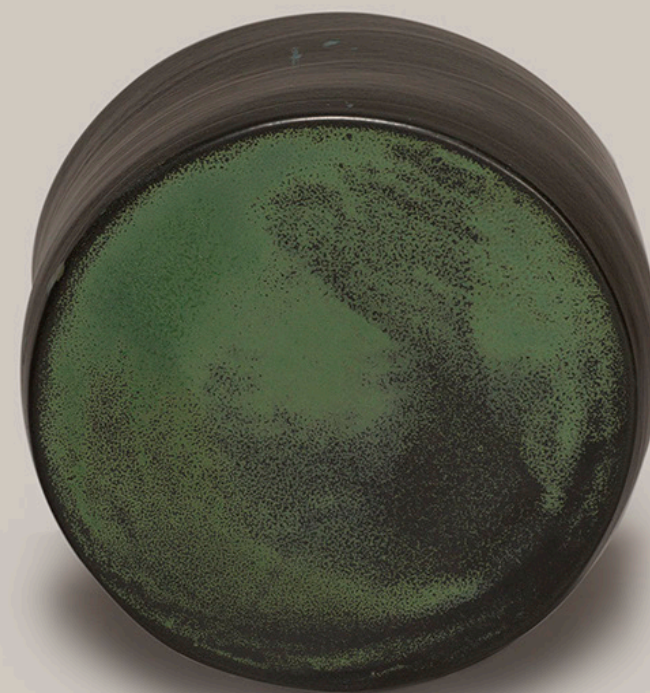
TORN, LA 234
Cooper / Stoneware
350mm (diameter), 400mm (height)/Price: 2600€





TORN, LA 346
Vanadium / Stoneware
350mm (diameter), 400mm (height) Price:2200€





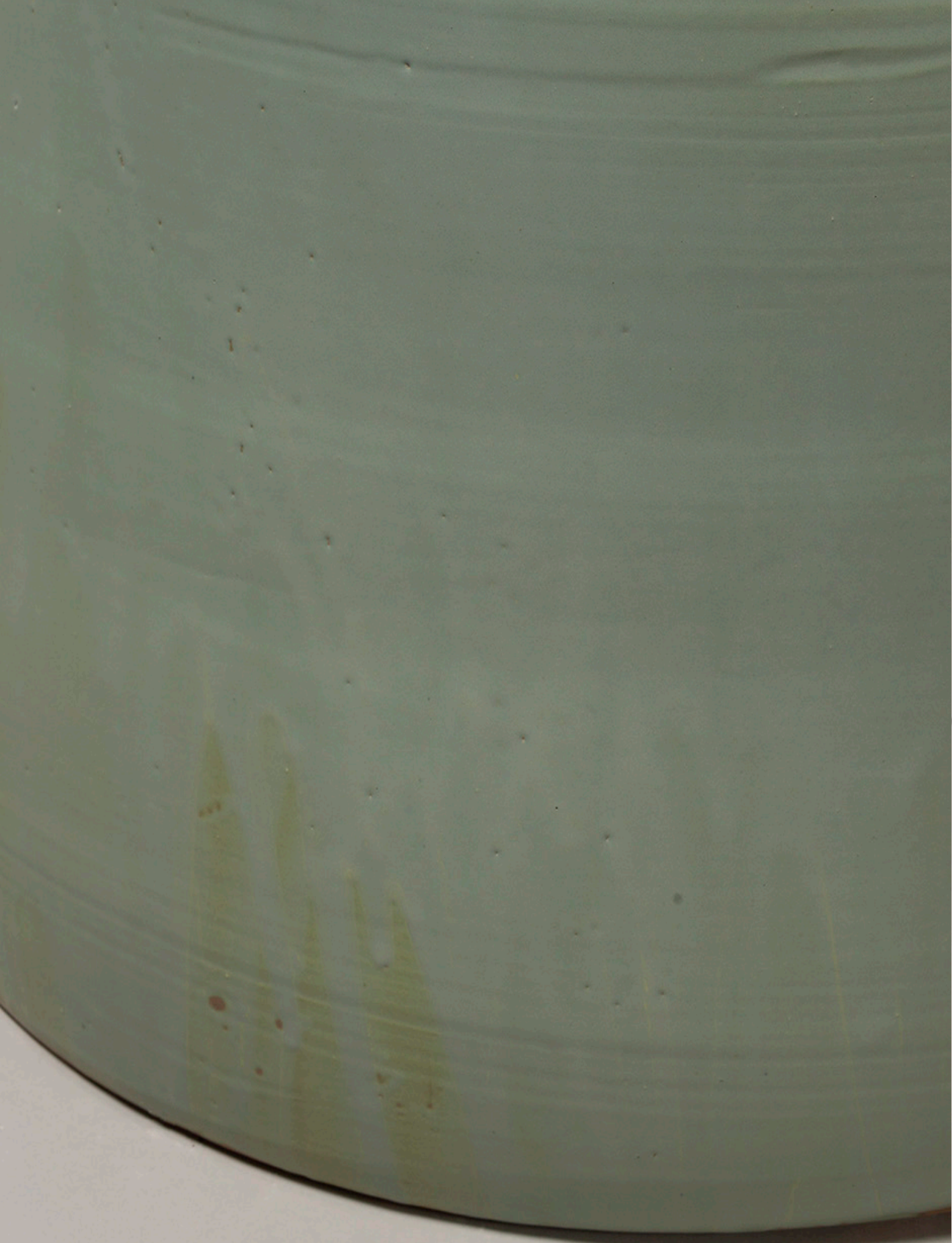
TORN, LA 639
Stoneware
350mm (diameter), 350mm (height) Price:1400€





TORN, LA 538
Stoneware
350mm (diameter), 350mm (height)/Price 1400€





Torn LA Green 718

Stoneware

500mm (diameter), 350mm (height)/Price: 2600€





Side Table LA 90-9 Cobalt

Lead Oxide, Earthenware

Height: 16.15 in (41 cm) Diameter: 15.75 in (40 cm)

Seat Height: 15.75 in (40 cm) Price: 2600€





Side Table LA 97

Lead Oxide, Earthenware

Height: 16.15 in (41 cm) Diameter: 15.75 in (40 cm)

Seat Height: 15.75 in (40 cm) Price: 2600€





Side Table LA 97 Cobalt

Lead Oxide, Earthenware

Height: 16.15 in (41 cm) Diameter: 15.75 in (40 cm)

Seat Height: 15.75 in (40 cm) Price: 2600€





Side Table LA 97 B

Lead Oxide, Earthenware

Height: 16.15 in (41 cm) Diameter: 15.75 in (40 cm)

Seat Height: 15.75 in (40 cm) Price: 2600€





Side Table LA 90-9 Ruthile

Lead Oxide, Earthenware

Height: 14.18 in (36 cm) Diameter: 13 in (33 cm)

Seat Height: 14.18 in (36 cm) Price: 2400€

Atril

A Selection of our last pieces made with Stoneware hand trhown on the wheel. Every piece is an exercise on materials, based on our studies in glazes, some of them are fired more then 4 times at 1280C°untyl the glaze make sense for us. The pieces can be used as side table or stool, each piece comes with a 5mm layer of natural leather in the bottom.







Lectern LA 97 M

Caramel Lead Oxide, Earthenware

Height: 3.94 in (10 cm) Width: 11.23 in (28.5 cm)

Depth: 7.49 in (19 cm) / Price: 1200€





Lectern LA 97 B

Black and Yellow Lead Oxide, Earthenware
Height: 7.68 in (19.5 cm) Width: 7.49 in (19 cm)
Depth: 7.49 in (19 cm) Price: 1300€





Lectern LA 95

Caramel Lead Oxide, Earthenware

Height: 7.49 in (19 cm) Width: 11.23 in (28.5 cm)

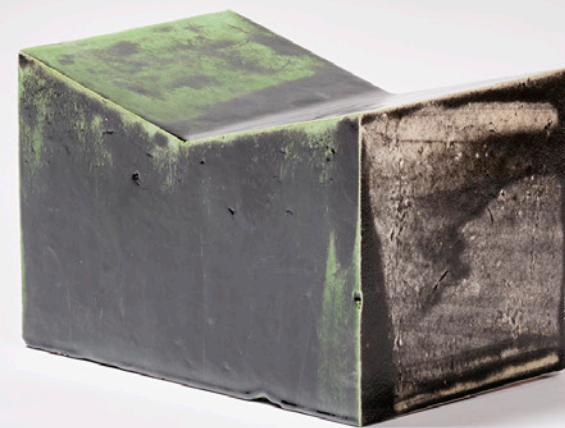
Depth: 7.29 in (18.5 cm) / Price: 1400€

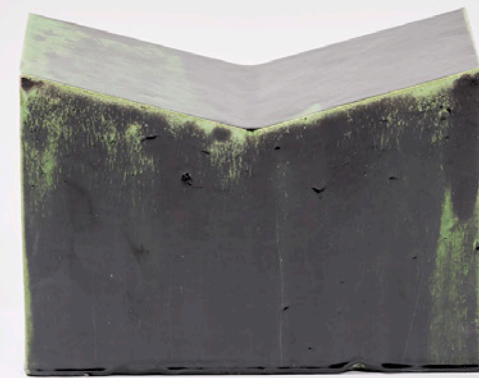
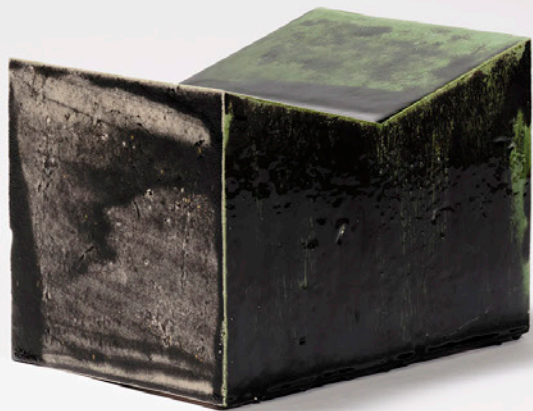




Lectern LA B

Black Cobalt Lead Oxide, Earthenware
Height: 7.49 in (19 cm) Width: 11.23 in (28.5 cm)
Depth: 7.49 in (19 cm) / Price: 1200€





Lectern LA 120

Black Cooper Lead Oxide, Earthenware
Height: 3.94 in (10 cm) Width: 11.23 in (28.5 cm)
Depth: 7.49 in (19 cm) / Price: 2500€



Lectern LA 97 L

Caramel Lead Oxide, Earthenware

Height: 5.91 in (15 cm) Width: 22.45 in (57 cm)

Depth: 7.49 in (19 cm) / Price: 1500€





Lectern D LA 97 D

Caramel Lead Oxide, Earthenware

Height: 7.49 in (19 cm) Width: 39.38 in (100 cm)

Depth: 7.49 in (19 cm) / Price: 2000€





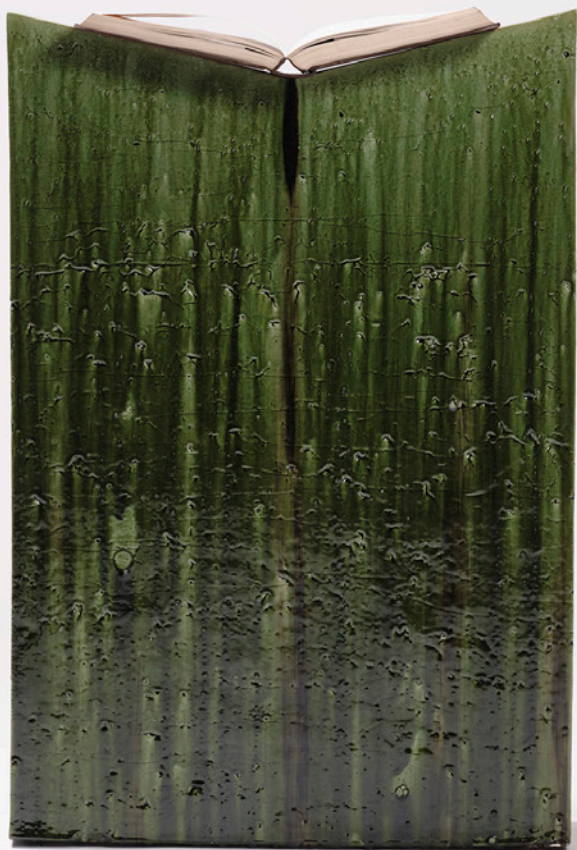
Lectern LA B.D.

Black Lead Oxide, Earthenware

Height: 3.94 in (10 cm) Width: 11.23 in (28.5 cm)

Depth: 7.49 in (19 cm) / Price: 2000€





Lectern LA 120 C

Cooper Lead Oxide, Earthenware

Height: 33.86 in (86 cm) Width: 22.84 in (58 cm)

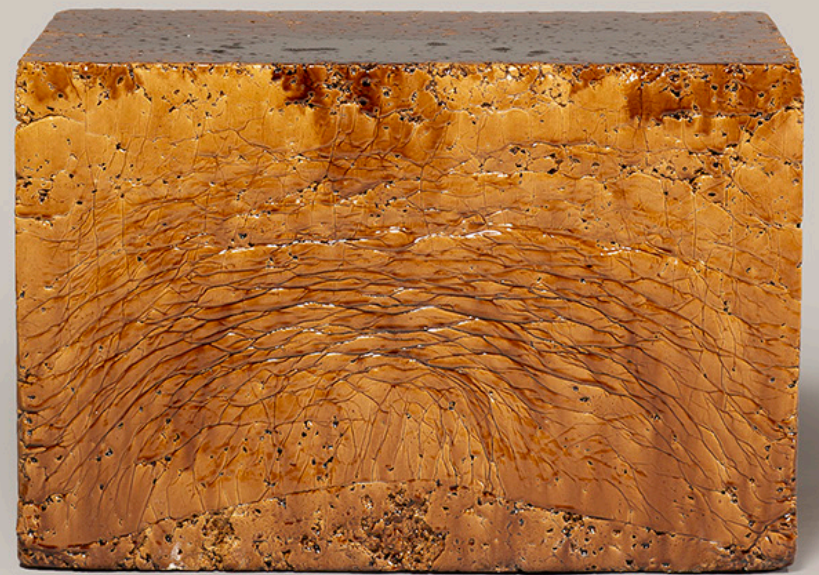
Depth: 7.49 in (19 cm) / Price: 10.000€



Bloq

These pieces are press moulded using a mixture of various clay bodies and natural fibres from Corn cobs to Heather Straw, The main glaze use on those ones is Lead Oxide, we are able to adjust shapes and sizes for commissions.



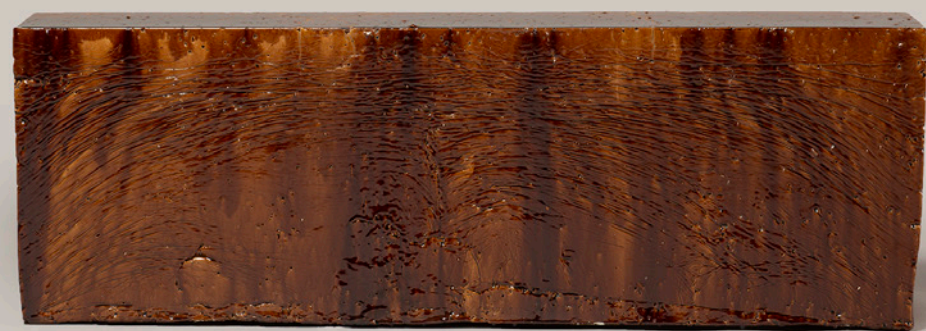




Bloc M 103

Lead oxide, Earthanware

Height: (38 cm) Width: (58 cm) Depth: (38 cm) / Price: 3000€





Bloc L202

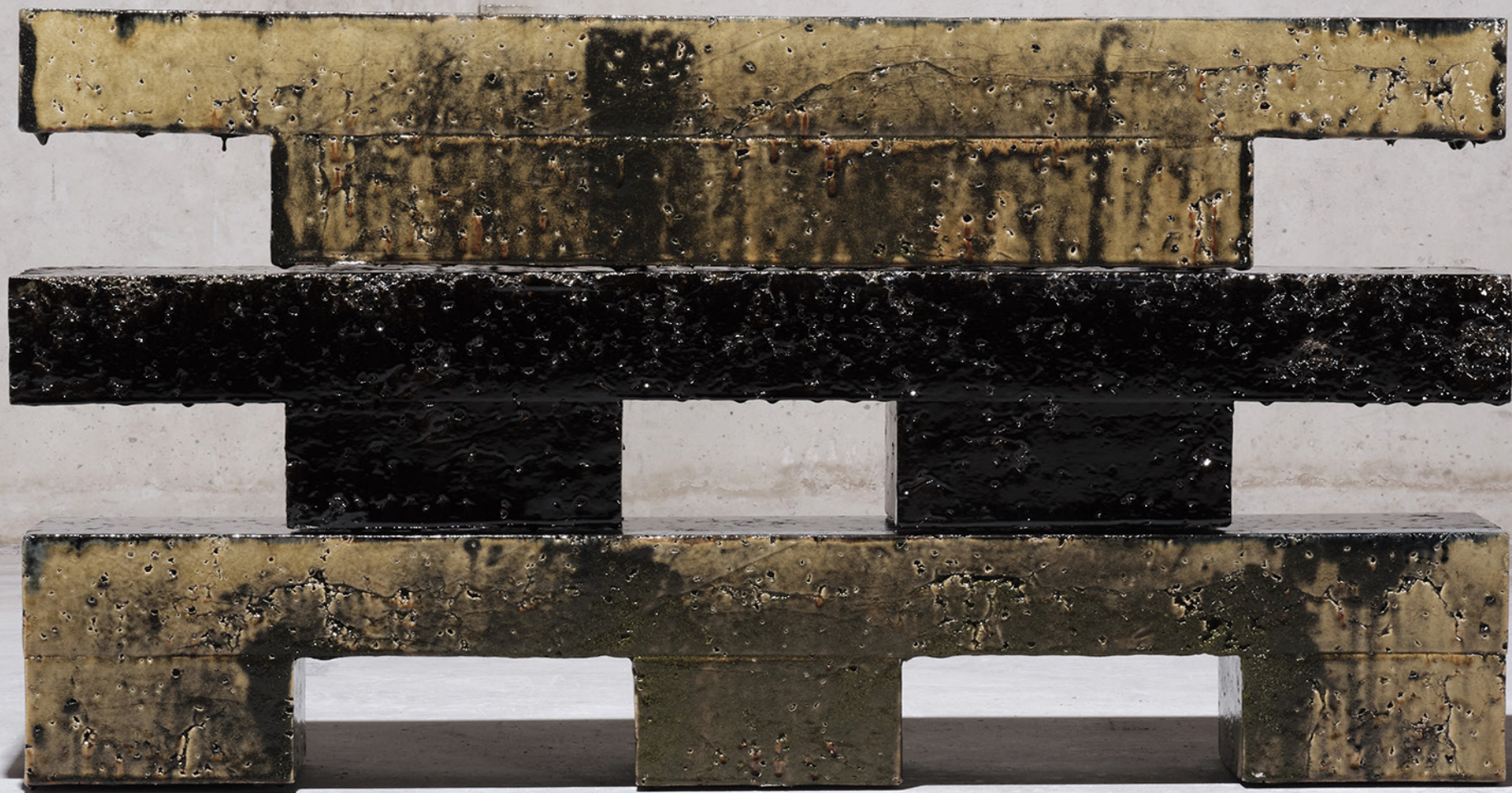
Lead Oxide, Earthenware

Height:38 cm, Width:108 cm. Depth:21 cm/Price: 6000€

Bench

These pieces are press moulded using a mixture of various clay bodies and natural fibres from Corn cobs to Heather Straw, The main glaze use on those ones is Lead Oxide, we are able to adjust shapes and sizes for commissions.









Low Table I Ruby

Lead Oxide, Earthenware

Height: 8.08 in (20.5 cm) Width: 45.28 in (115 cm)

Depth: 10.04 in (25.5 cm) / Price: 8.000€







Low Table II

Lead Oxide, Earthenware

Height: 8.08 in (20.5 cm) Width: 45.28 in (115 cm)

Depth: 10.04 in (25.5 cm) / Price: 6.000€





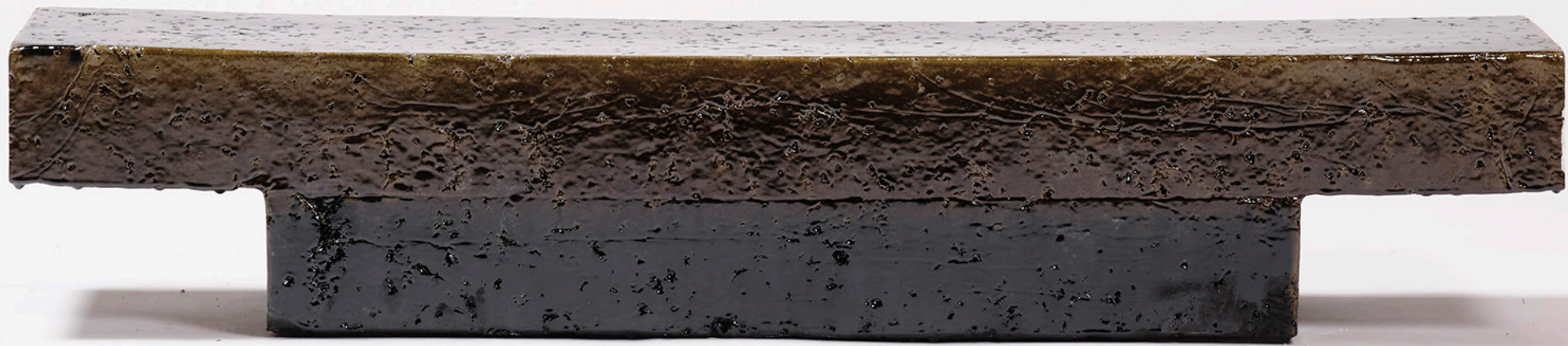


Low Table III Ruby

Lead Oxide, Earthenware

Height: 8.08 in (20.5 cm) Width: 45.28 in (115 cm)

Depth: 10.04 in (25.5 cm) / Price: 8.000€







Low Table I IN
Lead Oxide, Earthenware
Height: 8.08 in (20.5 cm) Width: 45.28 in (115 cm)
Depth: 10.04 in (25.5 cm) / Price: 8.000€









Low Table II T.R.

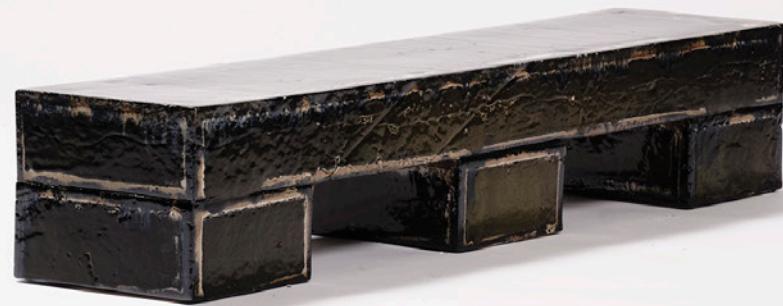
Lead Oxide, Earthenware

Height: 8.08 in (20.5 cm) Width: 45.28 in (115 cm)

Depth: 10.04 in (25.5 cm) / Price: 9.000€







Low Table III T.R.

Lead Oxide, Earthenware

Height: 8.08 in (20.5 cm) Width: 45.28 in (115 cm)

Depth: 10.04 in (25.5 cm) / Price: 9.000€



APPARATU